

Ten-Minute Dishcloth

This is a pattern designed for a bulky gauge knitting machine with patterning capabilities, such as the KH260 or SK155. I have called it the Ten-Minute Dishcloth because they can be made in ten minutes from start to finish – possibly less.

Gauge: Not important

Yarn: Any #4 worsted weight cotton. The example is knit in Bernat Handicrafter in Creamsicle.

Stitch Size: The example is knit at stitch size #9, as I wanted lots of holes and open spaces so it would dry properly.

Finished Object Size: The pattern as written gives an approximately 9" x 10" cloth. You may get a slightly larger or smaller cloth with different yarn, or if you use a different stitch size.



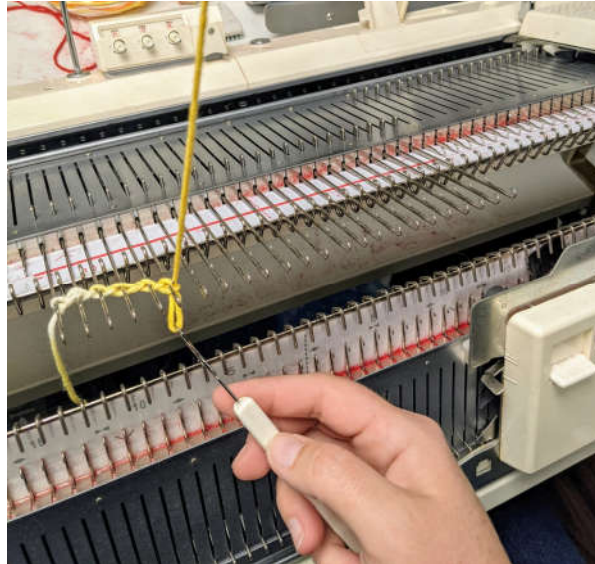
Back Side



Front Side

Instructions:

1. Select an appropriate tuck stitch punch card, or electronic tuck pattern. (Example was knit on a punch card machine.) Insert it into your machine, attach the plastic snaps, and lock the card on row #1. For more information on what is an appropriate tuck stitch pattern, please consult your manual. Tuck stitch doesn't roll, and gives lots of texture for scrubbing power.
2. With carriage on right (COR), and row counter at 0, (RC000) cast on **24 stitches**, from left to right, using a crochet cast on. Do this **as loosely as possible** to allow for more stretch in the finished object. The example would have been better with a looser cast on.

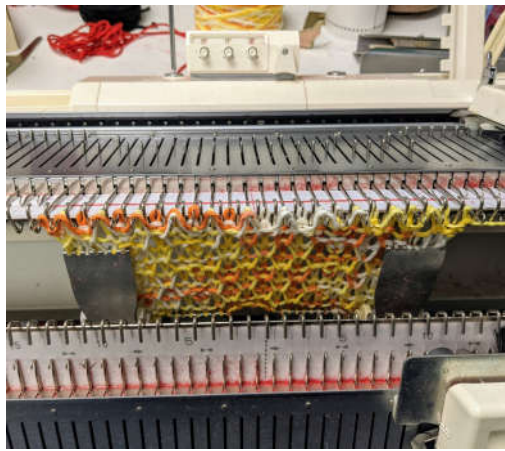


Crochet cast on

3. Thread the carriage, and set stitch size to 9 if you haven't already. The first row will be knit plain, however as we want to start patterning on the very next row, on a Brother machine, you will now need to set your change knob to KC in order to select needles for the next row. Knit one row from right to left, and hang claw weights at intervals along the knitting.



4. Now set your carriage for knitting tuck stitch. On a Brother KH260, this means you need to move the rubber wheels on the sinker plate to "working" position, add the left and right wheel brushes, and depress both "Tuck" buttons. You will also need to unlock your punch card. (On different machines, please consult your manual for how to begin knitting in tuck stitch.) Knit one row from left to right, and ensure that everything knit as it should.
5. Continue knitting in tuck stitch. After about 10 rows, hang claw weights on the edges of the knitting, and move them up every 10 rows or so.

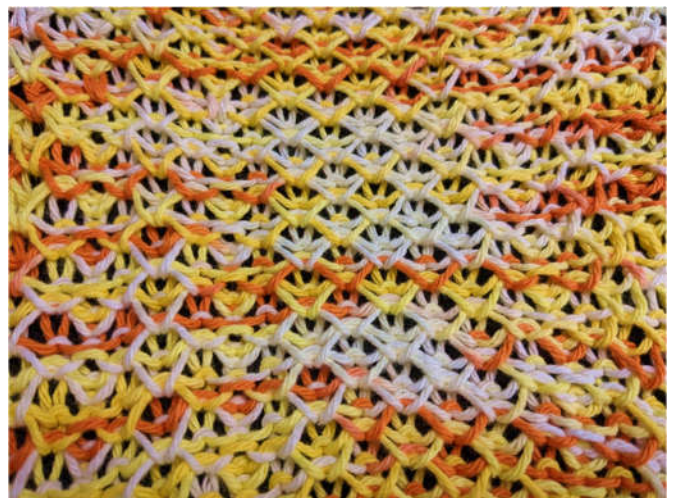


6. Continue knitting in pattern until RC60. End with COR, and set carriage back to plain knitting. On the Brother, remember to set change knob back to “N”!
7. Knit one row plain from right to left. Unthread the carriage, and then cast off from left to right, using the “around the gate pegs” method, **as loosely as possible**.



Casting off around the gate pegs

8. Cut yarn, remove weights, and remove the work from the machine. Weave in the yarn tails at the beginning and end, and voila! You now have a dish cloth. Happy scrubbing!



Different patterns, yarns, and stitch sizes will give different looks, so experiment!